



AAA SUPPLY CORPORATION had it's beginning in 1965. Since then, we have increased our warehouse facilities to over 200,000 square feet that is serviced by 7 overhead cranes & one 10 ton overhead crane.

Steel service is our primary business and includes burning, sawing, shearing, drilling, punching, threading and fabrication of rebars. Our automatic bandsaws provide multiple cutting when needed. Our fleet of trucks guarantees prompt delivery.

AAA Supply Corporation's president, Merrill Kikkert, has assembled over 100 years of combined professional expertise to insure the needs of you, our customer.

Our primary goal is to handle your orders in a fast and efficient manner. **YOUR BUSINESS IS IMPORTANT TO US.**

INDEX

Angles		
Bar Size	9-10	
Structural	11-12	
Beams		
Structural	1	
Wide Flange	5	
Black Pipe	43-44	
Boxes - Truck & Jobsite	58	
Carbon Steel Bars		
Rounds Hot Rolled	13-15	
Rounds Galvanized	15	
Rounds Cold Rolled	16-18	
Squares Hot Rolled	19	
Strip Hot Rolled	20-21	
Strip Galvanized	20	
Flats Hot Rolled	22-32	
Carbon Steel Safe - T Mesh	48-49	
Carbon Steel Flattened	50	
Channels		
Bar Size	6	
Stringer	6	
Structural	7	
Car and Ship Building	8	
Concrete Filled Columns	33	
Corrugated Pipe	12	
Culvert Pipe	67	
Expanded Metal	48	
Floor Grating	46-47	
Gas Powered Cutters	58	
Highway Guard Rail	56	
Merchant Quality Wire	54	
Plates - Floor	34	
Rebar	52-53	
Rebar Tire Wire	54	
Rectangular Tubing	41-42	
Reinforcing Bars	52	
Reinforcing Fabric (plain welded wire)	52	
Sheets		
Hot Rolled	35	
Cold Rolled	36	
Slotted Angle	47	
Fiber Tube Forms	68	
Square Tubing	39-40	
Steel Bars Threaded	45	
Steel Plates	38	
Steel Sheets	37	

**IF YOU DON'T SEE IT -
ASK FOR IT!**



STOCK ITEMS

Aluminum	Fiberglass Corrugated Panels	Reinforcing Mesh	Tampers
Anchor Bolts	Fiber Tube Forms	Reinforcing Rods	Tape Measures
Angles	First Aid Kits	Rockite	Tees (Split From Beams)
	Flat Bars	Roof Deck	Threaded Rods
Backer Rod	Floor Plate	Rope	Tie Wire (#16 and #19)
Banding & Accessories	Form Release (Duoguard)	Rouds	Tie Wire Reels
Band Cutters			Transits
Beams	Grade Rods	Safety Glasses	Trowels
Brick Saws	Grating (Bar)	Saw Blades	Brick
Bolt Cutters	Grinding Wheels	Sheets Steel	Cement
Bosch Tools	Grip-Strut	Shovels (Razorback)	Haivala
Brooms	Grout No. 588	Sledge Hammers	Kraft
	Guard Rail	Slotted Angle	Marshalltown
		Squares	
Cat Heads (Form Clamps)	Hammer Drills	Square Tubing	Unistrut
Chair Bars	Hand Rail Materials	Stakes (Wood & Steel)	
Chain	Hand Rail Pipe	Stainless Steel	Visqueen
Chalk Line	Hole Saws	Stihl®	
Channels	House Beams	Styroflex (White)	Wheelbarrows
Concrete Anchors	Husqvarna Construction Equip.	Styrofoam (Blue)	Wire Mesh
Concrete Blankets			Window Wells
Concrete Brooms	Ladders (Step & Extension)		Welded Wire Fabric
Concrete Chutes	Laser Levels		
Concrete Come-A-Longs	Leica Lasers		
Concrete Curing Products	Levels		
Concrete Edgers	Lifting Camps		
Concrete Groovers	Lolly Columns		
Concrete Saw Blades			
Concrete Vibrators	Marking Paint		
Construction Tool Boxes	Mortar Boxes		
Corrugated Pipe & Accessories			
Corrugated Panels	Nails		
Corrugated Seals	Nylon Tie Down Straps		
Cure & Seal for Concrete			
Cut Nails	Pins & Loads		
Cut Off Blades	Pintle Hitch		
	Pipe (New & Used)		
Diamond Cutting Wheels	Plate (All Sizes)		
Doors (Steel)	Post Hold Diggers		
Drill Bits	Push Brooms		
Expanded Metal	Rain Gear		
Expansion Joint			

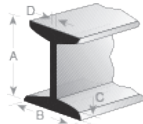


SERVICES

- Sawing
- Rebar Cutting
- Shearing
up to 3/4 plate x 12 feet
- Rebar Bending
- Flame Cutting
- Prompt Delivery

STRUCTURAL I BEAMS

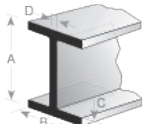
ASTM-A992



Nominal Size, Inches	Weight Per Foot, Lb.	Depth of Section, Inches	Flange		Web Thickness, Inches
			Width Inches	Thickness Inches	
3	5.7	3.00	2.330	0.260	.170
	7.5	3.00	2.509	0.260	.349
4	7.7	4.00	2.660	0.293	.190
	9.5	4.00	2.796	0.293	.326
5	10.0	5.00	3.000	0.326	.210
6	12.5	6.00	3.330	0.359	.230
	17.25	6.00	3.565	0.359	.465
7	15.3	7.00	3.660	0.392	.250
	20.0	7.00	3.860	0.392	.450
8	18.4	8.00	4.000	0.425	.270
	23.0	8.00	4.171	0.425	.441
10	25.4	10.00	4.660	0.491	.310
	35.0	10.00	4.944	0.491	.594
12	31.8	12.00	5.000	0.544	.350
	35.0	12.00	5.078	0.544	.428
	40.8	12.00	5.250	0.659	.460
	50.0	12.00	5.477	0.659	.687
15	42.9	15.00	5.500	0.622	.410
	50.0	15.00	5.640	0.622	.550
18	54.7	18.00	6.000	0.691	.460
	70.0	18.00	6.251	0.691	.711
20	66.0	20.00	6.250	0.795	.500
	75.0	20.00	6.391	0.795	.635
	86.0	20.30	7.070	0.920	.668
	96.0	20.30	7.200	0.920	.720
24	80.0	24.00	7.000	0.870	.500
	90.0	24.00	7.124	0.870	.624
	100.0	24.00	7.247	0.870	.747
	106.0	24.50	7.875	1.090	.625
	121.0	24.50	8.048	1.090	.798

WIDE FLANGE BEAMS

ASTM-A992

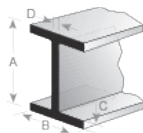


Nominal Size, Inches	Weight Per Foot, Lb.	Depth of Section, Inches	Flange		Web Thickness, Inches
			Width Inches	Thickness Inches	
4 x 4	13.0	4.16	4.06	.345	.280
5 x 5	16.0	5.01	5.00	.360	.240
	19.0	5.15	5.03	.430	.270
6 x 4	9.0	5.90	3.94	.215	.170
	12.0	6.00	4.00	.279	.230
	16.0	6.28	4.03	.405	.260
6 x 6	15.0	5.99	5.99	.260	.230
	20.0	6.20	6.02	.365	.260
	25.0	6.38	6.08	.455	.320
8 x 4	10.0	7.89	3.94	.205	.170
	13.0	7.99	4.00	.255	.230
	15.0	8.11	4.015	.315	.245
8 x 5¼	18.0	8.12	5.25	.330	.230
	21.0	8.28	5.27	.400	.250
8 x 6½	24.0	7.93	6.495	.400	.245
	28.0	8.06	6.535	.465	.285
8 x 8	31.0	8.00	7.995	.435	.285
	35.0	8.12	8.02	.495	.310
	40.0	8.25	8.07	.560	.360
	48.0	8.50	8.11	.685	.400
	58.0	8.75	8.22	.810	.510
	67.0	9.00	8.28	.935	.570
10 x 4	12.0	9.87	3.96	.210	.190
	15.0	9.99	4.00	.270	.230
	17.0	10.11	4.01	.330	.240
	19.0	10.24	4.02	.395	.250
10 x 5¼	22.0	10.17	5.75	.360	.240
	26.0	10.33	5.77	.440	.260
	30.0	10.47	5.81	.510	.300
10 x 8	33.0	9.73	7.96	.435	.290
	39.0	9.92	7.985	.530	.315
	45.0	10.10	8.02	.620	.350

WIDE FLANGE BEAMS

ASTM-A992

CONTINUED

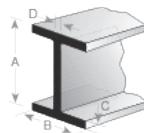


Nominal Size, Inches	Weight Per Foot, Lb.	Depth of Section, Inches	Flange		Web Thickness, Inches
			Width Inches	Thickness Inches	
10 x 10	49.0	9.98	10.00	.560	.340
	54.0	10.09	10.01	.615	.370
	--	--	--	--	--
	60.0	10.22	10.08	.680	.420
	68.0	10.40	10.13	.770	.470
	--	--	--	--	--
	77.0	10.60	10.19	.870	.530
	88.0	10.84	10.265	.990	.605
	100.0	11.10	10.34	1.120	.680
112.0	11.36	10.415	1.250	.755	
12 x 4	14.0	11.91	3.97	.225	.200
	16.0	11.99	3.99	.265	.220
	19.0	12.16	4.005	.350	.235
	22.0	12.31	4.03	.425	.260
12 x 6½	26.0	12.22	6.49	.380	.230
	30.0	12.35	6.52	.440	.260
	35.0	12.50	6.56	.520	.300
12 x 8	40.0	11.94	8.005	.515	.295
	45.0	12.06	8.045	.575	.335
	50.0	12.19	80.8	.640	.370
12 x 10	53.0	12.06	9.9995	.575	.345
	58.0	12.19	10.01	.640	.360
12 x 12	65.0	12.12	12.00	.605	.390
	72.0	12.25	12.04	.670	.430
	--	--	--	--	--
	79.0	12.38	12.08	.735	.470
	87.0	12.53	12.125	.810	.515
	96.0	12.71	12.16	.900	.550
	--	--	--	--	--
	106.0	12.89	12.22	.990	.610
120.0	13.12	12.32	1.105	.710	
14 x 5	22.0	13.74	5.00	.335	.230
	26.0	13.91	5.025	.420	.255

WIDE FLANGE BEAMS

ASTM-A992

CONTINUED

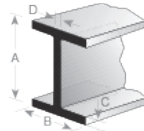


Nominal Size, Inches	Weight Per Foot, Lb.	Depth of Section, Inches	Flange		Web Thickness, Inches
			Width Inches	Thickness Inches	
14 x 6¼	30.0	13.84	6.073	.385	.270
	34.0	13.98	6.745	.455	.285
	38.0	14.10	6.77	.515	.310
14 x 8	43.0	13.66	7.995	.530	.305
	48.0	13.79	8.03	.595	.340
	53.0	13.92	8.06	.660	.370
14 x 10	61.0	13.89	9.9995	.645	.375
	68.0	14.04	10.035	.720	.415
	74.0	14.17	10.07	.785	.450
	82.0	14.31	10.13	.855	.510
14 x 14	90.0	14.02	14.520	.710	.440
	99.9	14.16	14.565	.780	.485
	109.0	14.32	14.605	.860	.525
16 x 5½	26.0	15.69	5.500	.345	.250
	31.0	15.88	5.525	.400	.275
16 x 7	36.0	15.86	6.985	.430	.295
	40.0	16.01	6.995	.505	.305
	45.0	13.13	7.035	.565	.345
	50.0	16.26	7.07	.630	.380
	57.0	16.43	7.12	.715	.430
16 x 10	67.0	16.33	10.235	.665	.395
	77.0	16.52	10.295	.760	.455
	89.0	16.75	10.365	.875	.585
	100.0	16.97	10.425	.985	.585
18 x 6	35.0	17.70	6.00	.425	.300
	40.0	17.90	6.015	.525	.315
	46.0	18.06	6.06	.605	.360
18 x 7½	50.0	17.99	7.495	.570	.355
	55.0	18.11	7.53	.630	.390
	60.0	18.24	7.555	.695	.415
	65.0	18.35	7.590	.750	.450
	71.0	18.47	7.635	.810	.495

WIDE FLANGE BEAMS

ASTM-A992

CONTINUED

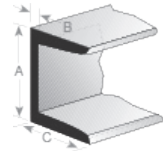


Nominal Size, Inches	Weight Per Foot, Lb.	Depth of Section, Inches	Flange		Web Thickness, Inches
			Width Inches	Thickness Inches	
18 x 11	76.0	18.21	11.035	.680	.425
	86.0	18.39	11.09	.770	.480
	97.0	18.59	11.145	.870	.535
	106.0	18.73	11.20	.940	.590
	119.0	18.97	11.265	1.06	.655
21 x 6½	44.0	20.66	6.50	.450	.350
	50.0	20.83	6.53	.535	.380
	57.0	21.06	6.555	.650	.405
21 x 8¼	62.0	20.99	8.24	.615	.400
	68.0	21.13	8.27	.685	.430
	73.0	21.24	8.295	.740	.455
21 x 9	83.0	21.43	8.3555	.835	.515
	93.0	21.62	8.42	.930	.580
21 x 12	101.0	21.36	12.29	.800	.500
	111.0	21.51	12.34	.875	.550
	122.0	21.68	12.39	.960	.600
	132.0	21.83	12.44	1.035	.650
	147.0	22.06	12.51	1.150	.720
24 x 7	55.0	23.57	7.005	.505	.395
	62.0	23.74	7.04	.590	.430
24 x 9	68.0	23.73	8.965	.585	.415
	76.0	23.92	8.99	.680	.440
	84.0	24.10	9.02	.770	.470
	94.0	24.31	9.065	.875	.515
24 x 12	104.0	2.06	12.75	.750	.500
	117.0	24.26	12.80	.850	.550
24 x 14	131.0	24.48	12.855	.960	.605
	146.0	24.74	12.90	1.090	.650
	162.0	25.00	12.955	1.220	.705

BAR SIZE CHANNELS

AISI-M 1020

Hot Rolled



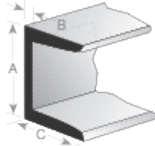
A B C Size in Inches	Weight, Pounds		Stock Lengths Ft.
	Per Ft.	of 20' Bar	
¾ x ¾ x ⅛	.56	11.2	20
1 x ½ x ⅛	.83	16.6	20
1 ⅛ x ¾ x ⅜	1.16	23.2	20
1 ¼ x ½ x ⅛	1.01	20.2	20
1 ½ x ½ x ⅛	1.12	22.4	20
1 ½ x ¾ x ⅜	1.44	28.8	20
1 ½ x ¾ x ⅛	1.17	23.4	20
2 x ½ x ⅛	1.43	28.6	20
2 x ⅝ x ⅜	1.76	35.2	20
2 x ⅝ x ¼	2.28	45.6	20
2 x 1 x ⅛	1.59	31.8	20
2 x 1 x ⅜	2.32	46.4	20
2 ½ x ⅝ x ⅜	2.27	45.4	20

STRINGER CHANNELS

Nominal Size, Inches	Weight Per Foot, Lb.	Web Thickness, Inches	Flange Width, Inches
10	8.4	.170	1.500
12	10.6	.190	1.500

STRUCTURAL CHANNELS

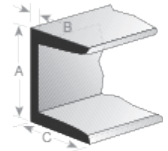
ASTM-A36



A Nominal Size, Inches	Weight Per Foot, Lb.	B Web Thickness, Inches	C Flange Width, Inches
3	3.5	0.150	1.35
	4.1	0.170	1.410
	5.0	0.258	1.498
	6.0	0.356	1.596
4	4.5	0.150	1.55
	5.4	0.180	1.580
	7.25	0.320	1.720
5	6.7	0.190	1.750
	9.0	.0325	1.885
6	8.2	0.200	1.920
	10.5	0.314	2.034
	13.0	0.437	2.157
7	9.8	0.210	2.090
	12.25	0.314	2.194
	14.75	0.419	2.299
8	8.5	0.180	1.875
	11.5	0.220	2.260
	13.75	0.303	2.343
	18.75	0.487	2.527
9	13.4	0.230	2.430
	15.0	0.285	2.485
	20.0	0.448	2.648
10	15.3	0.240	2.600
	20.0	0.379	2.739
	25.0	0.526	2.886
	30.0	0.673	3.033
12	20.7	0.280	2.940
	25.0	0.387	3.047
	30.0	0.510	3.170
15	33.9	0.400	3.400
	40.0	0.520	3.520
	50.0	0.716	3.716

CHANNELS, CAR BUILDING AND SHIP BUILDING

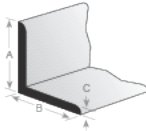
ASTM-A36



A Nominal Size, Inches	Weight Per Foot, Lb.	B Web Thickness, Inches	C Flange Width, Inches
3	7.1	.312	1.938
4	13.8	.500	2.500
	12.0	.313	2.500
6	15.1	.313	2.938
	15.3	.340	3.500
	16.3	.375	3.000
	18.0	.375	3.500
7	19.1	.350	3.450
	22.7	.500	3.600
8	18.7	.350	2.975
	20.0	.400	3.025
	21.4	.375	3.450
	22.8	.425	3.500
9	23.9	.400	3.450
	25.4	.450	3.500
10	21.9	.325	3.450
	24.9	.375	3.400
	25.3	.425	3.550
	28.3	.475	3.500
	28.5	.425	3.950
	33.6	.575	4.100
12	30.9	.450	3.450
	32.9	.500	3.500
	35.0	.467	3.767
	37.0	.600	3.600
	40.0	.590	3.890
	45.0	.700	4.000
13	50.0	.835	4.135
	31.8	.375	4.000
	35.0	.447	4.072
	40.0	.560	4.185
18	50.0	.787	4.412
	42.7	.450	3.950
	45.8	.500	4.000
	51.9	.600	4.100
58.0	.700	4.200	

BAR SIZE ANGLES

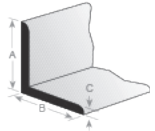
ASTM-A36
Hot Rolled



A B C Size in Inches	Weight, Pounds		Stock Lengths Ft.
	Per Ft.	of 20' Bar	
1/2 x 1/2 x 1/8	.38	7.60	20
5/8 x 5/8 x 1/8	.48	9.60	20
3/4 x 3/4 x 1/8	.59	11.80	20
7/8 x 7/8 x 1/8	.70	14.00	20
1 x 5/8 x 1/8	.64	12.80	20
1 x 3/4 x 1/8	.70	14.00	20
1 x 1 x 1/8	.80	16.00	20
	3/16	23.20	
	1/4	29.80	
1 1/8 x 1 1/8 x 1/8	.90	18.00	20
1 1/4 x 1 1/4 x 1/8	1.01	20.20	20
	3/16	29.60	
	1/4	38.40	
1 3/8 x 7/8 x 1/8	.91	18.20	20
	3/16	26.40	
1 1/2 x 3/4 x 1/8	.91	18.20	20
1 1/2 x 1 1/4 x 3/16	1.64	32.80	20
1 1/2 x 1 1/2 x 1/8	1.23	24.60	20
	3/16	36.00	
	1/4	46.80	
1 3/4 x 1 1/4 x 1/8	1.23	24.60	20
	3/16	36.00	
	1/4	46.80	
1 3/4 x 1 3/4 x 1/8	1.44	28.80	20
	3/16	42.40	
	1/4	55.40	

BAR SIZE ANGLES

ASTM-A36
CONTINUED



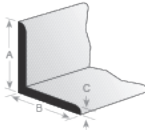
A B C Size in Inches	Weight, Pounds		Stock Lengths Ft.
	Per Ft.	of 20' Bar	
2 x 1 1/2 x 1/8	1.44	28.80	20
	3/16	42.40	
	1/4	55.40	
2 x 2 x 1/8	1.65	33.00	20
	3/16	48.80	
	1/4	6.80	
	5/16	78.40	
	3/8	94.00	
2 1/4 x 1 1/2 x 3/16	2.28	45.60	20
	1/4	59.60	
2 1/2 x 1 1/2 x 3/16	2.44	48.80	20
	1/4	63.80	
	5/16	78.40	
2 1/2 x 2 x 3/16	2.75	55.00	20
	1/4	72.40	
	5/16	90.00	
	3/8	106.00	
2 1/2 x 2 1/2 x 3/16	3.07	61.40	20
	1/4	82.00	
	5/16	100.00	
	3/8	118.00	
	1/2	154.00	

Angles can be furnished galvanized on short notice.
Prices on request.

**PLACE YOUR ORDERS
OR ASK YOUR QUESTIONS
219-865-8500**

STRUCTURAL ANGLES

ASTM-A36



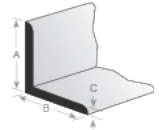
A B C Size in Inches	Weight Per Ft., Lb.
3 x 2 x 3/16	3.07
1/4	4.1
5/16	5.0
3/8	5.9
1/2	7.7
3 x 2 1/2 x 1/4	4.5
5/16	5.6
3/8	6.6
1/2	8.5
3 x 3 x 3/16	3.71
1/4	4.9
5/16	6.1
3/8	7.2
7/16	8.3
1/2	9.4
5/8	11.5
3 1/2 x 2 1/2 x 1/4	4.9
5/16	6.1
3/8	7.2
1/2	9.4
3 1/2 x 3 x 1/4	5.4
5/16	6.6
3/8	7.9
1/2	10.2
3 1/2 x 3 1/2 x 1/4	5.8
5/16	7.2
3/8	8.5
7/16	9.8
1/2	11.1
3/4	16.0
4 x 3 x 1/4	5.8
5/16	7.2
3/8	8.5
7/16	9.8
1/2	11.1
5/8	13.6

A B C Size in Inches	Weight Per Ft., Lb.
4 x 3 1/2 x 1/4	6.2
5/16	7.7
3/8	9.1
7/16	10.6
1/2	11.9
5/8	14.7
4 x 4 x 1/4	6.6
5/16	8.2
4 x 4 x 3/8	9.8
7/16	11.3
1/2	12.8
5/8	15.7
3/4	18.5
5 x 3 x 1/4	6.6
5/16	8.2
3/8	9.8
7/16	11.3
1/2	12.8
5 x 3 1/2 x 1/4	7.0
5/16	8.7
3/8	10.4
7/16	12.0
1/2	13.6
5/8	16.8
3/4	19.8
5 x 5 x 5/16	10.3
3/8	12.3
7/16	14.3
1/2	16.2
5/8	20.0
3/4	23.6
7/8	27.2

STRUCTURAL ANGLES

ASTM-A36

CONTINUED



A B C Size in Inches	Weight Per Ft., Lb.
6 x 3 1/2 x 1/4	7.9
5/16	9.8
3/8	11.7
1/2	15.3
6 x 4 x 5/16	10.3
3/8	12.3
7/16	14.3
1/2	16.2
5/8	20.0
3/4	23.6
7/8	27.2
6 x 6 x 5/16	12.6
3/8	14.9
7/16	17.2
1/2	19.6
9/16	21.9
5/8	24.2
3/4	28.7
7/8	33.1
1	37.4
7 x 4 x 3/8	13.6
7/16	15.8
1/2	17.9
9/16	20.0
5/8	22.1
3/4	26.2
7/8	30.2

A B C Size in Inches	Weight Per Ft., Lb.
8 x 4 x 7/16	17.2
1/2	19.6
9/16	21.9
5/8	24.2
3/4	28.7
7/8	33.1
1	37.4
8 x 6 x 7/16	20.02
1/2	23.0
9/16	25.7
8 x 6 x 5/8	28.5
3/4	33.8
7/8	39.1
1	44.2
8 x 8 x 1/2	26.4
9/16	29.6
5/8	32.7
3/4	38.9
7/8	45.0
1 1/8	51.0
56.9	
9 x 4 x 1/2	21.3
9/16	23.8
5/8	26.3
3/4	31.3
7/8	36.1
1	408

CORRUGATED PIPE

6" 8" 10" 12" 15" 18" 21" 24" 30" 36" 48"

We have a complete stock of all sizes, including coupling bands and fared end sections; tee's and el's are available on request.

We stock 20' lengths and other lengths can be cut to order.

FOR PROMPT SERVICE
219-865-8500

HOT ROLLED CARBON STEEL BARS

Classification

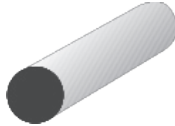
Irrespective of shape, hot rolled bars are furnished in either Merchant or Special Quality.

Merchant Quality is a term applied to a grade of steel in common use for production and repair work when forging or heat-treating or intricate machining is not required.

Special Quality Steel is a higher grade than Merchant Bar quality and commonly used for hammer-forging, heat-treating, cold drawing or other fabrication process.

HOT ROLLED ROUNDS

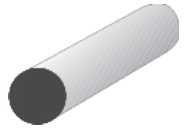
Merchant Quality
ASTM-A36



Size in Inches	Weight, Pounds		Stock Lengths Ft.
	Per Ft.	of 20' Bar	
5/32	0.065	12'-.78	12
3/16	0.094	12'-1.13	12
1/4	0.167	3.34	20
5/16	1.261	5.22	20
3/8	0.376	7.52	20
7/16	0.511	10.22	20
1/2	0.668	13.36	20
9/16	0.845	16.90	20
5/8	1.04	20.8	20
11/16	1.26	25.2	20
3/4	1.50	30.0	20
13/16	1.76	35.2	20
7/8	2.04	40.8	20
15/16	2.35	47.0	20
1	2.367	53.4	20
1 5/16	3.01	60.2	20
1 1/8	3.38	67.6	20
1 3/16	3.77	75.4	20
1 1/4	4.17	83.4	20
1 5/16	4.60	92.0	20

HOT ROLLED ROUNDS

Merchant Quality
ASTM-A36
CONTINUED



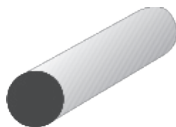
Size in Inches	Weight, Pounds		Stock Lengths Ft.
	Per Ft.	of 20' Bar	
1 3/8	5.05	101.0	20
1 7/16	5.52	110.4	20
1 1/2	6.01	120.2	20
1 5/8	7.05	141.0	20
1 3/4	8.18	163.6	20
1 7/8	9.39	187.8	20
2	10.68	213.6	20
2 1/8	12.06	241.2	20
2 1/4	13.52	270.4	20
2 3/8	15.06	301.2	20
2 1/2	16.69	333.8	20
2 5/8	18.41	368.0	20
2 3/4	20.19	403.8	20
2 7/8	22.07	441.4	20
3	24.03	480.6	20
3 1/8	26.08	521.6	20
3 1/4	28.21	564.2	20
3 3/8	30.42	608.4	20
3 1/2	32.71	654.2	20
3 5/8	35.09	701.8	20
3 3/4	37.55	751.0	20
3 7/8	40.10	802.0	20
4	42.73	854.6	20
4 1/8	45.44	908.8	20
4 1/4	48.23	964.6	20
4 3/8	51.11	1022.2	20
4 1/2	54.08	1081.6	20
4 5/8	57.12	1142.4	20
4 3/4	60.25	1205.0	20
4 7/8	63.46	1269.2	20

HOT ROLLED ROUNDS

Merchant Quality

ASTM-A36

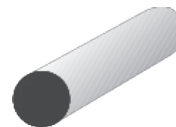
CONTINUED



Size in Inches	Weight, Pounds		Stock Lengths Ft.
	Per Ft.	of 20' Bar	
5	66.76	1335.2	20
5 $\frac{1}{8}$	70.14	1402.8	20
5 $\frac{1}{4}$	73.60	1472.0	20
5 $\frac{3}{8}$	77.15	1543.0	20
5 $\frac{1}{2}$	80.78	1615.6	20
5 $\frac{3}{4}$	88.29	1765.8	20
6	96.13	1922.6	20
6 $\frac{1}{8}$	100.18	2003.6	20
6 $\frac{1}{4}$	104.31	2086.2	20
6 $\frac{1}{2}$	112.82	2256.4	20
6 $\frac{3}{8}$	117.20	2344.0	20
6 $\frac{3}{4}$	121.67	2433.4	20
7	130.85	2617.0	20
7 $\frac{1}{4}$	140.36	2807.2	20
7 $\frac{1}{2}$	150.21	3004.2	20
7 $\frac{3}{4}$	160.39	3207.8	20
8	170.90	3418.0	20
8 $\frac{1}{2}$	192.93	3858.6	20
9	216.30	4326.0	20
9 $\frac{1}{2}$	241.00	4820.0	20
10	267.00	5340.0	20
10 $\frac{1}{2}$	294.40	5888.0	20
11	323.10	6462.0	20

COLD FINISHED ROUNDS

C1018 C1045



Size in Inches	Weight, Pounds		
	Per Ft.	of 12' Bar	of 20' Bar
$\frac{1}{8}$.042	.50	
$\frac{8}{32}$.065	.78	
$\frac{3}{16}$.094	1.13	
$\frac{7}{32}$.128	1.54	
$\frac{1}{4}$.167	2.00	
$\frac{17}{64}$.188	2.26	
$\frac{5}{32}$.211	2.53	
$\frac{5}{16}$.261	3.13	
$\frac{21}{64}$.288	3.46	
$\frac{11}{32}$.316	3.79	
$\frac{3}{8}$.376	4.51	7.52
$\frac{25}{64}$.408	5.29	
$\frac{13}{32}$.441	5.29	
$\frac{7}{16}$.511	6.13	
$\frac{15}{32}$.587	7.04	
$\frac{1}{2}$.668	8.02	13.36
$\frac{23}{64}$.710	8.52	
$\frac{17}{32}$.754	9.05	
$\frac{9}{16}$.845	10.14	
$\frac{19}{32}$.941	11.29	
$\frac{5}{8}$	1.043	12.52	20.86
$\frac{41}{64}$	1.096	13.15	
$\frac{11}{16}$	1.262	15.14	
$\frac{23}{32}$	1.380	16.56	
$\frac{3}{4}$	1.502	18.02	30.04
$\frac{49}{64}$	1.565	18.78	
$\frac{25}{32}$	1.630	19.56	
$\frac{13}{16}$	1.763	21.16	35.26
$\frac{27}{32}$	1.901	22.81	
$\frac{7}{8}$	2.045	24.54	40.90
$\frac{57}{64}$	2.118	25.42	
$\frac{29}{32}$	2.19	26.28	
$\frac{15}{16}$	2.35	28.20	
$\frac{31}{32}$	2.51	30.12	

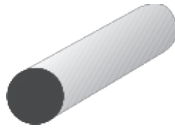
GALVANIZED ROUNDS

Rounds in stock can be quickly hot dip galvanized.

COLD FINISHED ROUNDS

C1018 C1045

CONTINUED

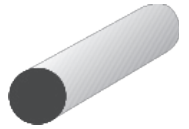


Size in Inches	Weight, Pounds		
	Per Ft.	of 12' Bar	of 20' Bar
1	2.67	32.04	53.40
1 ¹ / ₃₂	2.84	34.08	
1 ¹ / ₁₆	3.01	36.12	60.20
1 ¹ / ₈	3.38	40.56	67.60
1 ³ / ₁₆	3.77	45.24	75.40
1 ¹ / ₄	4.17	50.04	83.40
1 ⁵ / ₁₆	4.60	55.20	92.00
1 ³ / ₈	5.05	60.60	101.00
1 ⁷ / ₁₆	5.52	66.24	110.41
1 ¹ / ₂	6.01	72.12	120.20
1 ⁹ / ₁₆	6.52	78.24	130.40
1 ⁵ / ₈	7.05	84.60	141.00
1 ¹¹ / ₁₆	7.60	91.20	152.00
1 ³ / ₄	8.18	98.16	163.60
1 ¹³ / ₁₆	8.77	105.24	175.40
1 ⁷ / ₈	9.39	112.68	187.80
1 ¹⁵ / ₁₆	10.02	120.24	200.40
2	10.68	128.16	213.63
2 ¹ / ₁₆	11.36	136.32	227.19
2 ¹ / ₈	12.06	144.72	241.17
2 ³ / ₁₆	12.78	153.36	255.56
2 ¹ / ₄	13.52	162.24	270.37
2 ⁵ / ₁₆	14.28	171.36	285.60
2 ³ / ₈	15.06	180.72	301.25
2 ⁷ / ₁₆	15.87	190.44	317.31
2 ¹ / ₂	16.69	200.28	333.80
2 ⁹ / ₁₆	17.53	210.36	350.69
2 ⁵ / ₈	18.40	220.80	368.01
2 ¹¹ / ₁₆	19.29	231.48	385.74
2 ³ / ₄	20.20	242.40	403.89
2 ¹³ / ₁₆	21.12	253.44	422.46
2 ⁷ / ₈	22.07	264.84	441.44
2 ¹⁵ / ₁₆	23.04	276.48	460.84

COLD FINISHED ROUNDS

C1018 C1045

CONTINUED

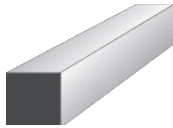


Size in Inches	Weight, Pounds		
	Per Ft.	of 12' Bar	of 20' Bar
3	24.03	288.36	480.60
3 ¹ / ₁₆	25.05	300.60	500.90
3 ¹ / ₈	26.08	312.96	521.56
3 ³ / ₁₆	27.13	325.56	542.62
3 ¹ / ₄	28.12	338.52	564.12
3 ⁵ / ₁₆	29.30	351.60	586.02
3 ³ / ₈	30.42	365.04	608.34
3 ⁷ / ₁₆	31.55	378.60	631.08
3 ¹ / ₂	32.71	392.52	654.24
3 ⁹ / ₁₆	33.89	406.68	701.80
3 ⁵ / ₈	35.09	421.08	726.22
3 ³ / ₄	37.55	450.60	751.04
3 ⁷ / ₈	40.10	481.20	801.94
4	42.73	512.76	854.52
4 ¹ / ₈	45.44	545.28	908.76
4 ¹ / ₄	48.23	578.76	964.66
4 ³ / ₈	51.11	613.32	1022.24
4 ¹ / ₂	54.08	648.96	1081.50
4 ⁵ / ₈	57.12	685.44	1142.42
4 ³ / ₄	60.25	723.00	1205.00
4 ⁷ / ₈	63.46	761.52	1269.26
5	66.76	801.12	1335.18
5 ¹ / ₄	73.60	883.20	1472.04
5 ¹ / ₂	80.78	969.36	1615.56
5 ³ / ₄	88.29	1059.48	1765.80
6	93.16	1153.56	1922.60

**FOR PROMPT SERVICE
219-865-8500**

HOT ROLLED SQUARES

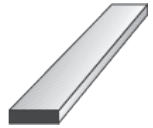
ASTM-A36



Size in Inches	Weight, Pounds		Stock Lengths Ft.
	Per Ft.	Per 20' Bar	
1/4	.213	4.26	20
5/16	.332	6.64	20
3/8	.478	9.56	20
7/16	.651	13.02	20
1/2	.850	17.00	20
9/16	1.08	21.60	20
5/8	1.33	26.60	20
1 1/16	1.61	32.20	20
3/4	1.91	38.20	20
7/8	2.60	52.00	20
1	3.40	68.00	20
1 1/8	4.30	86.00	20
1 1/4	5.31	106.20	20
1 3/8	6.43	128.60	20
1 1/2	7.65	153.00	20
1 5/8	8.98	179.60	20
1 3/4	10.41	208.20	20
2	13.60	272.00	20
2 1/4	17.21	344.20	20
2 1/2	21.25	425.00	20
2 3/4	25.71	514.20	20
3	30.60	612.0	20
3 1/2	41.65	833.0	20
4	54.40	1088.0	20
4 1/2	68.85	1377.0	20
5	85.00	1700.0	20
6	122.40	2448.0	20

HOT ROLLED STRIP

ASTM-A36



Size in Inches	Weight, Pounds		Stock Lengths Ft.
	Per Ft.	Per 20' Bar	
1/8 x 3/8	0.159		20
1/8 x 1/2	0.123	4.26	20
1/8 x 5/8	0.266	5.32	20
1/8 x 3/4	0.319	6.38	20
1/8 x 7/8	0.372	7.44	20
1/8 x 1	0.425	8.50	20
1/8 x 1 1/8	0.478	9.56	20
1/8 x 1 1/4	0.531	10.62	20
1/8 x 1 3/8	0.584	11.68	20
1/8 x 1 1/2	0.638	12.76	20
1/8 x 1 5/8	0.691	13.82	20
1/8 x 1 3/4	0.744	14.88	20
1/8 x 2	0.850	17.00	20
1/8 x 2 1/4	0.956	19.12	20
1/8 x 2 1/2	1.063	21.26	20
1/8 x 2 3/4	1.169	23.38	20
1/8 x 3	1.275	25.50	20
1/8 x 3 1/4	1.381	27.62	20
1/8 x 3 1/2	1.488	29.76	20
1/8 x 3 3/4	1.594	31.88	20
1/8 x 4	1.700	34.00	20
1/8 x 4 1/2	1.913	38.26	20
1/8 x 5	2.125	42.50	20
1/8 x 5 1/2	2.338	46.76	20
1/8 x 6	2.550	51.00	20
1/8 x 7	2.975	59.50	20
1/8 x 8	3.400	68.00	20
1/8 x 9	3.825	76.50	20
1/8 x 10	4.250	85.00	20
1/8 x 12	5.100	102.00	20

For 3/16" x 14" and wider, see Hot Rolled Sheets.

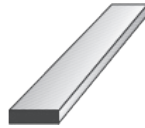
GALVANIZED STRIP

Hot Rolled Strip carried in stock can be quickly galvanized.
Prices on request

HOT ROLLED STRIP

ASTM-A36

CONTINUED



Size in Inches	Weight, Pounds		Stock Lengths Ft.
	Per Ft.	Per 20' Bar	
3/16 x 3/8	.239	4.78	20
3/16 x 1/2	.319	6.38	20
3/16 x 5/8	.398	7.96	20
3/16 x 3/4	.478	9.56	20
3/16 x 7/8	.558	11.16	20
3/16 x 1	.638	12.76	20
3/16 x 1 1/8	.717	14.34	20
3/16 x 1 1/4	.797	15.94	20
3/16 x 1 3/8	.877	17.54	20
3/16 x 1 1/2	.956	19.12	20
3/16 x 1 3/4	1.116	22.32	20
3/16 x 1 7/8	1.195	23.90	20
3/16 x 2	1.275	25.50	20
3/16 x 2 1/4	1.434	28.68	20
3/16 x 2 1/2	1.594	31.88	20
3/16 x 2 3/4	1.753	35.06	20
3/16 x 3	1.913	38.26	20
3/16 x 3 1/4	2.072	41.44	20
3/16 x 3 1/2	2.231	44.62	20
3/16 x 3 3/4	2.391	47.82	20
3/16 x 4	2.550	51.00	20
3/16 x 4 1/2	2.868	57.36	20
3/16 x 5	3.188	63.76	20
3/16 x 6	3.825	76.50	20
3/16 x 7	4.46	89.20	20
3/16 x 8	5.10	102.00	20
3/16 x 9	5.74	114.80	20
3/16 x 10	6.38	127.60	20
3/16 x 12	7.65	153.00	20

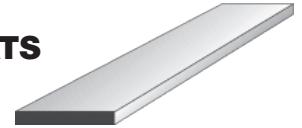
For 3/16" x 14" and wider, see Hot Rolled Sheets.

GALVANIZED STRIP

Hot Rolled Strip carried in stock can be quickly galvanized.
Prices on request

HOT ROLLED FLATS

ASTM-A36

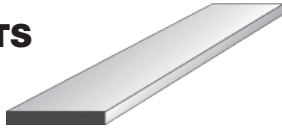


Size in Inches	Weight, Pounds		Stock Lengths Ft.
	Per Ft.	Per 20' Bar	
1/4 x 3/8	0.319	6.38	20
1/4 x 1/2	0.425	8.50	20
1/4 x 5/8	0.531	10.62	20
1/4 x 3/4	0.638	12.76	20
1/4 x 7/8	0.744	14.88	20
1/4 x 1	0.850	17.00	20
1/4 x 1 1/8	0.956	19.12	20
1/4 x 1 1/4	1.06	21.3	20
1/4 x 1 3/8	1.17	23.4	20
1/4 x 1 1/2	1.28	25.6	20
1/4 x 1 5/8	1.39	27.6	20
1/4 x 1 3/4	1.49	29.8	20
1/4 x 2	1.70	34.0	20
1/4 x 2 1/4	1.91	38.3	20
1/4 x 2 1/2	2.13	42.6	20
1/4 x 2 3/4	2.34	46.8	20
1/4 x 3	2.55	51.0	20
1/4 x 3 1/4	2.76	55.3	20
1/4 x 3 1/2	2.98	59.6	20
1/4 x 3 3/4	3.19	63.8	20
1/4 x 4	3.40	68.0	20
1/4 x 4 1/4	3.61	72.3	20
1/4 x 4 1/2	3.83	76.6	20
1/4 x 5	4.25	85.0	20
1/4 x 5 1/2	4.68	93.6	20
1/4 x 6	5.10	102.0	20
1/4 x 7	5.95	119.0	20
1/4 x 8	6.80	136.0	20

HOT ROLLED FLATS

ASTM-A36

CONTINUED

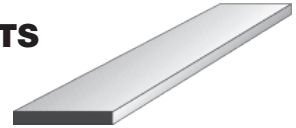


Size in Inches	Weight, Pounds		Stock Lengths Ft.
	Per Ft.	Per 20' Bar	
$\frac{5}{16} \times \frac{1}{2}$	0.531	10.62	20
$\frac{5}{16} \times \frac{5}{8}$	0.664	13.28	20
$\frac{5}{16} \times \frac{3}{4}$	0.797	15.94	20
$\frac{5}{16} \times \frac{7}{8}$	0.930	18.60	20
$\frac{5}{16} \times 1$	1.06	21.3	20
$\frac{5}{16} \times 1\frac{1}{8}$	1.20	24.0	20
$\frac{5}{16} \times 1\frac{1}{4}$	1.33	26.6	20
$\frac{5}{16} \times 1\frac{3}{8}$	1.46	29.2	20
$\frac{5}{16} \times 1\frac{1}{2}$	1.59	31.9	20
$\frac{5}{16} \times 1\frac{3}{4}$	1.86	37.2	20
$\frac{5}{16} \times 2$	2.13	42.6	20
$\frac{5}{16} \times 2\frac{1}{4}$	2.39	47.8	20
$\frac{5}{16} \times 2\frac{1}{2}$	2.66	53.1	20
$\frac{5}{16} \times 2\frac{3}{4}$	2.92	58.4	20
$\frac{5}{16} \times 3$	3.19	63.8	20
$\frac{5}{16} \times 3\frac{1}{4}$	3.45	69.1	20
$\frac{5}{16} \times 3\frac{1}{2}$	3.72	74.4	20
$\frac{5}{16} \times 4$	4.25	85.0	20
$\frac{5}{16} \times 4\frac{1}{2}$	4.78	95.6	20
$\frac{5}{16} \times 5$	5.31	106.2	20
$\frac{5}{16} \times 5\frac{1}{2}$	5.84	116.8	20
$\frac{5}{16} \times 6$	6.38	127.6	20
$\frac{5}{16} \times 7$	7.44	149.9	20
$\frac{5}{16} \times 8$	8.50	170.0	20

HOT ROLLED FLATS

ASTM-A36

CONTINUED

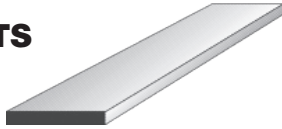


Size in Inches	Weight, Pounds		Stock Lengths Ft.
	Per Ft.	Per 20' Bar	
$\frac{3}{8} \times \frac{1}{2}$	0.638	12.76	20
$\frac{3}{8} \times \frac{5}{8}$	0.797	15.94	20
$\frac{3}{8} \times \frac{3}{4}$	0.956	19.12	20
$\frac{3}{8} \times \frac{7}{8}$	1.116	22.32	20
$\frac{3}{8} \times 1$	1.28	25.6	20
$\frac{3}{8} \times 1\frac{1}{8}$	1.43	28.6	20
$\frac{3}{8} \times 1\frac{1}{4}$	1.59	31.8	20
$\frac{3}{8} \times 1\frac{3}{8}$	1.75	35.0	20
$\frac{3}{8} \times 1\frac{1}{2}$	1.91	38.2	20
$\frac{3}{8} \times 1\frac{5}{8}$	2.07	41.4	20
$\frac{3}{8} \times 1\frac{3}{4}$	2.23	44.6	20
$\frac{3}{8} \times 2$	2.55	51.0	20
$\frac{3}{8} \times 2\frac{1}{4}$	2.87	57.4	20
$\frac{3}{8} \times 2\frac{1}{2}$	3.19	63.8	20
$\frac{3}{8} \times 2\frac{3}{4}$	3.51	70.2	20
$\frac{3}{8} \times 3$	3.83	76.6	20
$\frac{3}{8} \times 3\frac{1}{4}$	4.14	82.9	20
$\frac{3}{8} \times 3\frac{1}{2}$	4.46	89.3	20
$\frac{3}{8} \times 4$	5.10	102.0	20
$\frac{3}{8} \times 4\frac{1}{2}$	5.74	114.8	20
$\frac{3}{8} \times 5$	6.38	127.6	20
$\frac{3}{8} \times 5\frac{1}{2}$	7.01	140.3	20
$\frac{3}{8} \times 6$	7.65	153.0	20
$\frac{3}{8} \times 7$	8.93	178.6	20
$\frac{3}{8} \times 8$	10.20	204.0	20

HOT ROLLED FLATS

ASTM-A36

CONTINUED

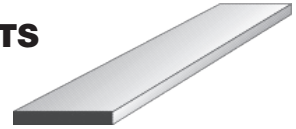


Size in Inches	Weight, Pounds		Stock Lengths Ft.
	Per Ft.	Per 20' Bar	
7/16 x 5/8	0.93	18.6	20
7/16 x 3/4	1.12	22.4	20
7/16 x 7/8	1.30	26.0	20
7/16 x 1	1.49	29.8	20
7/16 x 1 1/8	1.67	33.5	20
7/16 x 1 1/4	1.86	37.2	20
7/16 x 1 3/8	2.05	41.0	20
7/16 x 1 1/2	2.23	44.6	20
7/16 x 1 3/4	2.60	52.1	20
7/16 x 2	2.98	59.6	20
7/16 x 2 1/4	3.35	67.0	20
7/16 x 2 1/2	3.72	74.4	20
7/16 x 3	4.46	89.2	20
7/16 x 3 1/2	5.21	104.2	20
7/16 x 4	5.95	119.0	20
7/16 x 4 1/2	6.69	133.9	20
7/16 x 5	7.44	148.8	20
7/16 x 6	8.93	178.6	20
7/16 x 7	10.41	208.2	20
7/16 x 8	11.90	238.0	20

HOT ROLLED FLATS

ASTM-A36

CONTINUED

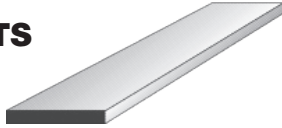


Size in Inches	Weight, Pounds		Stock Lengths Ft.
	Per Ft.	Per 20' Bar	
1/2 x 1/2	1.06	21.2	20
1/2 x 3/4	1.28	25.6	20
1/2 x 7/8	1.49	29.8	20
1/2 x 1	1.70	34.0	20
1/2 x 1 1/8	1.91	38.2	20
1/2 x 1 1/4	2.13	42.6	20
1/2 x 1 3/8	2.34	46.8	20
1/2 x 1 1/2	2.55	51.0	20
1/2 x 1 5/8	2.76	55.3	20
1/2 x 1 3/4	2.98	59.6	20
1/2 x 2	3.40	68.0	20
1/2 x 2 1/4	3.83	76.6	20
1/2 x 2 1/2	4.25	85.0	20
1/2 x 2 3/4	4.68	93.6	20
1/2 x 3	5.10	102.0	20
1/2 x 3 1/4	5.53	110.6	20
1/2 x 3 1/2	5.95	119.0	20
1/2 x 3 3/4	6.38	127.6	20
1/2 x 4	6.80	136.0	20
1/2 x 4 1/2	7.65	153.0	20
1/2 x 5	8.50	170.0	20
1/2 x 5 1/2	9.35	187.0	20
1/2 x 6	10.20	204.0	20
1/2 x 7	11.90	238.0	20
1/2 x 8	13.60	272.0	20

HOT ROLLED FLATS

ASTM-A36

CONTINUED



Size in Inches	Weight, Pounds		Stock Lengths Ft.
	Per Ft.	Per 20' Bar	
$\frac{5}{8} \times \frac{3}{4}$	1.59	31.9	20
$\frac{5}{8} \times \frac{7}{8}$	1.86	37.2	20
$\frac{5}{8} \times 1$	2.13	42.6	20
$\frac{5}{8} \times 1\frac{1}{8}$	2.39	47.8	20
$\frac{5}{8} \times 1\frac{1}{4}$	2.66	52.3	20
$\frac{5}{8} \times 1\frac{3}{8}$	2.92	58.4	20
$\frac{5}{8} \times 1\frac{1}{2}$	3.19	63.8	20
$\frac{5}{8} \times 1\frac{5}{8}$	3.445	69.0	20
$\frac{5}{8} \times 1\frac{3}{4}$	3.72	74.4	20
$\frac{5}{8} \times 2$	4.25	85.0	20
$\frac{5}{8} \times 2\frac{1}{4}$	4.78	95.6	20
$\frac{5}{8} \times 2\frac{1}{2}$	5.31	106.3	20
$\frac{5}{8} \times 2\frac{3}{4}$	5.84	116.9	20
$\frac{5}{8} \times 3$	6.38	127.6	20
$\frac{5}{8} \times 3\frac{1}{4}$	6.91	138.1	20
$\frac{5}{8} \times 3\frac{1}{2}$	7.44	148.8	20
$\frac{5}{8} \times 4$	8.50	170.0	20
$\frac{5}{8} \times 4\frac{1}{2}$	9.56	191.3	20
$\frac{5}{8} \times 5$	10.63	212.6	20
$\frac{5}{8} \times 5\frac{1}{2}$	11.69	233.8	20
$\frac{5}{8} \times 6$	12.75	255.0	20
$\frac{5}{8} \times 7$	14.88	297.6	20
$\frac{5}{8} \times 8$	17.00	340.0	20

HOT ROLLED FLATS

ASTM-A36

CONTINUED

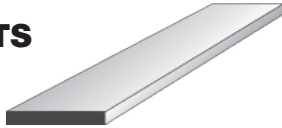


Size in Inches	Weight, Pounds		Stock Lengths Ft.
	Per Ft.	Per 20' Bar	
$\frac{3}{4} \times \frac{7}{8}$	2.23	44.6	20
$\frac{3}{4} \times 1$	2.55	51.0	20
$\frac{3}{4} \times 1\frac{1}{8}$	2.87	57.4	20
$\frac{3}{4} \times 1\frac{1}{4}$	3.19	63.8	20
$\frac{3}{4} \times 1\frac{3}{8}$	3.51	70.1	20
$\frac{3}{4} \times 1\frac{1}{2}$	3.83	76.6	20
$\frac{3}{4} \times 1\frac{5}{8}$	4.14	82.9	20
$\frac{3}{4} \times 1\frac{3}{4}$	4.46	89.3	20
$\frac{3}{4} \times 2$	5.10	102.0	20
$\frac{3}{4} \times 2\frac{1}{4}$	5.74	114.8	20
$\frac{3}{4} \times 2\frac{1}{2}$	6.38	127.6	20
$\frac{3}{4} \times 2\frac{3}{4}$	7.01	140.3	20
$\frac{3}{4} \times 3$	7.65	153.0	20
$\frac{3}{4} \times 3\frac{1}{4}$	8.29	165.8	20
$\frac{3}{4} \times 3\frac{1}{2}$	8.93	178.6	20
$\frac{3}{4} \times 4$	10.20	204.0	20
$\frac{3}{4} \times 4\frac{1}{2}$	11.48	229.6	20
$\frac{3}{4} \times 5$	12.75	255.0	20
$\frac{3}{4} \times 5\frac{1}{2}$	14.03	280.6	20
$\frac{3}{4} \times 6$	15.30	306.0	20
$\frac{3}{4} \times 7$	17.85	357.0	20
$\frac{3}{4} \times 8$	20.40	408.0	20

HOT ROLLED FLATS

ASTM-A36

CONTINUED

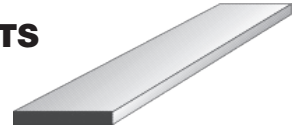


Size in Inches	Weight, Pounds		Stock Lengths Ft.
	Per Ft.	Per 20' Bar	
7/8 x 1	2.98	59.6	20
7/8 x 1 1/8	3.35	66.9	20
7/8 x 1 1/4	3.72	74.4	20
7/8 x 1 3/8	4.09	81.8	20
7/8 x 1 1/2	4.46	89.3	20
7/8 x 1 3/4	5.24	104.1	20
7/8 x 2	5.95	119.0	20
7/8 x 2 1/4	6.69	133.9	20
7/8 x 2 1/2	7.44	148.8	20
7/8 x 2 3/4	8.18	163.6	20
7/8 x 3	8.93	178.6	20
7/8 x 3 1/4	9.67	193.4	20
7/8 x 3 1/2	10.41	208.2	20
7/8 x 4	11.90	238.0	20
7/8 x 4 1/2	13.39	267.8	20
7/8 x 5	14.88	297.6	20
7/8 x 5 1/2	16.36	327.3	20
7/8 x 6	17.85	357.0	20
7/8 x 7	20.83	416.6	20
7/8 x 8	23.80	476.0	20

HOT ROLLED FLATS

ASTM-A36

CONTINUED

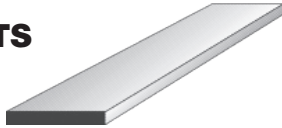


Size in Inches	Weight, Pounds		Stock Lengths Ft.
	Per Ft.	Per 20' Bar	
1 x 1 1/4	4.25	85.0	20
1 x 1 1/2	5.10	102.0	20
1 x 1 3/4	5.95	119.0	20
1 x 2	6.80	136.0	20
1 x 2 1/4	7.65	153.0	20
1 x 2 1/2	8.50	170.0	20
1 x 2 3/4	9.35	187.0	20
1 x 3	10.20	204.0	20
1 x 3 1/4	11.05	221.0	20
1 x 3 1/2	11.90	238.0	20
1 x 4	13.60	272.0	20
1 x 4 1/2	15.30	306.0	20
1 x 5	17.00	340.0	20
1 x 5 1/2	18.70	374.0	20
1 x 6	20.40	408.0	20
1 x 7	23.80	476.0	20
1 x 8	27.20	544.0	20
1 1/8 x 2	7.65	153.0	20
1 1/8 x 2 1/2	9.56	191.3	20
1 1/8 x 3	11.48	229.6	20
1 1/8 x 3 1/4	12.43	248.6	20
1 1/8 x 3 1/2	13.39	267.8	20
1 1/8 x 4	15.30	306.0	20
1 1/8 x 5	19.13	382.6	20
1 1/8 x 6	22.95	459.0	20
1 1/8 x 7	26.78	535.6	20
1 1/8 x 8	30.60	612.0	20

HOT ROLLED FLATS

ASTM-A36

CONTINUED

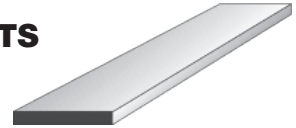


Size in Inches	Weight, Pounds		Stock Lengths Ft.
	Per Ft.	Per 20' Bar	
1¼ x 1½	6.38	127.6	20
1¼ x 1¾	7.44	148.8	20
1¼ x 2	8.50	170.0	20
1¼ x 2¼	9.56	191.2	20
1¼ x 2½	10.63	212.6	20
1¼ x 2¾	11.69	233.8	20
1¼ x 3	12.75	255.0	20
1¼ x 3¼	13.81	276.2	20
1¼ x 3½	14.88	297.6	20
1¼ x 4	17.00	340.0	20
1¼ x 4½	19.13	382.6	20
1¼ x 5	21.25	425.0	20
1¼ x 5½	23.38	476.6	20
1¼ x 6	25.50	510.0	20
1¼ x 7	29.75	595.0	20
1¼ x 8	34.00	680.0	20
1½ x 1¾	8.93	178.6	20
1½ x 2	10.20	204.0	20
1½ x 2¼	11.48	229.6	20
1½ x 2½	12.75	255.0	20
1½ x 2¾	14.03	280.6	20
1½ x 3	15.30	306.0	20
1½ x 3½	17.85	357.0	20
1½ x 4	20.40	408.0	20
1½ x 4½	22.95	459.0	20
1½ x 5	25.50	510.0	20
1½ x 5½	28.05	561.0	20
1½ x 6	30.60	612.0	20
1½ x 7	35.40	714.0	20
1½ x 8	40.80	816.0	20

HOT ROLLED FLATS

ASTM-A36

CONTINUED



Size in Inches	Weight, Pounds		Stock Lengths Ft.
	Per Ft.	Per 20' Bar	
1¾ x 2	11.90	238.0	20
1¾ x 2¼	13.39	267.8	20
1¾ x 2½	14.88	297.6	20
1¾ x 2¾	16.36	327.2	20
1¾ x 3	17.85	357.0	20
1¾ x 3½	20.83	416.6	20
1¾ x 4	23.80	476.0	20
1¾ x 4½	26.78	535.6	20
1¾ x 5	29.75	595.0	20
1¾ x 6	35.70	714.0	20
2 x 2¼	15.30	306.0	20
2 x 2½	17.00	340.0	20
2 x 3	20.40	408.0	20
2 x 3½	23.80	476.0	20
2 x 4	27.20	544.0	20
2 x 4½	30.60	612.0	20
2 x 5	34.00	680.0	20
2 x 6	40.80	816.0	20
2 x 7	47.60	952.0	20
2 x 8	54.40	1088.0	20
2¼ x 3	22.95	459.0	20
2½ x 3	25.50	510.0	20
2½ x 3½	29.75	595.0	20
2½ x 4	34.00	680.0	20
2½ x 4½	38.25	765.0	20
2½ x 5	42.50	850.0	20
2½ x 6	51.00	1020.0	20
3 x 3½	35.70	714.0	20
3 x 4	40.80	816.0	20
3 x 4½	45.90	918.0	20
3 x 5	51.00	1020.0	20
3 x 6	61.20	1224.0	20
3½ x 4	47.60	952.0	20

Other thickness and sizes
can be supplied from mill rollings.

Also available:
Abrasion Resistant Sheets
High Strength Sheets
Aluminum Sheets
Stainless Sheets

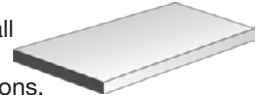
CONCRETE FILLED COLUMNS

Diameter	Stock Lengths
3½	6' 8"
3½	6' 10"
3½	6' 0"
3½	7' 0"
3½	7' 4"
3½	8' 0"
3½	8' 6"
3½	9' 0"
3½	10' 0"
3½	11' 0"
3½	12' 0"

Other lengths are obtainable. We invite your inquiry.

FLOOR PLATE

Floor plates carried in stock in all
gauges, thickness and sizes.
They can be cut to your specifications.



*Size in Inches	Weight Per Ft., Lb.	Stock Lengths, Ft.	*Size in Inches	Weight Per Ft., Lb.	Stock Lengths, Ft.
*16 x (3.00 lb./sq. ft.)			5/16 x (13.80 lb./sq. ft.)		
30	7.50	8, 10	30	34.50	8-20
36	9.00	8, 10, 12	36	41.40	8-20
48	12.00	8, 10	42	48.30	8-20
*14 x (3.75 lb./sq. ft.)			48	55.20	8-20
30	9.38	8, 10	60	69.00	8-20
36	11.25	10, 12	72	82.80	8-20
42	13.13	8, 10, 12	3/8 x (16.35 lb./sq. ft.)		
48	15.00	8, 10, 12	30	40.88	8-20
*12 x (5.25 lb./sq. ft.)			36	49.05	8-20
36	15.75	8, 10, 12, 20	42	57.23	8-20
48	21.00	8, 10, 12, 20	48	65.40	8-20
60	26.25	8, 10, 12, 20	60	81.75	8-20
1/8 x (6.15 lb./sq. ft.)			72	98.10	8-20
30	15.37	8, 10, 12, 20	84	114.45	8-20
36	18.45	8, 10, 12, 20	96	130.80	8-20
48	24.60	8, 10, 12, 20	1/2 x (21.45 lb./sq. ft.)		
60	30.75	8, 10, 12, 20	30	53.63	8-20
3/16 x (8.70 lb./sq. ft.)			36	64.35	8-20
24	11.40	8-20	42	75.08	8-20
30	21.75	8-20	48	85.80	8-20
36	26.10	8-20	60	107.25	8-20
42	30.45	8-20	72	128.70	8-20
48	34.80	8-20	96	171.60	8-20
60	43.50	8-20	5/8 x (26.55 lb./sq. ft.)		
72	52.20	8-20	36	79.65	8-20
1/4 x (11.25 lb./sq. ft.)			42	92.93	8-20
24	22.50	8-20	48	106.20	8-20
30	28.13	8-20	60	132.75	8-20
36	33.75	8-20	72	159.30	8-20
42	39.38	8-20	96	212.40	8-20
48	45.00	8-20	3/4 x (31.65 lb./sq. ft.)		
60	56.25	8-20	60	158.25	8-20
72	67.50	8-20	72	189.90	8-20
96	90.00	8-20	96	253.20	8-20
			1 x (41.85 lb./sq. ft.)		
			72	251.10	8-20

*Thickness exclusive of projections.

HOT ROLLED SHEETS

A-36

U.S.S. (Rev.) or Mfr.'s Gauge, Size, Inches	Est. Wt. Per Sheet, Lb.
7 Ga. (.1793") Lb./sq. ft. 7.50 Stock lengths 8', 10', 12', 20'	
48 x 240	600.0
60 x 240	750.0
72 x 240	900.0
Over 72" - See Plate Section	
10 Ga. (.1345") Lb./sq. ft. 5.625	
36 x 96	135.0
36 x 120	168.8
36 x 144	202.5
42 x 120	196.9
48 x 96	180.0
48 x 120	225.0
48 x 144	270.0
60 x 96	225.0
60 x 120	281.3
60 x 144	337.5
60 x 240	562.5
72 x 96	270.0
72 x 120	337.5
72 x 240	675.0
84 x 240	787.5
11 Ga. (.1196") Lb./sq. ft. 5.00	
36 x 96	120.0
36 x 120	150.0
48 x 96	160.0
48 x 120	200.0
48 x 144	240.0
60 x 96	200.0
60 x 120	250.0
60 x 144	300.0
60 x 240	500.0
72 x 96	240.0
72 x 144	300.0
72 x 240	360.0
72 x 240	600.0
12 Ga. (.1046") Lb./sq. ft. 4.375	
36 x 96	105.0
36 x 120	131.0
36 x 144	157.5
48 x 96	140.0
48 x 120	175.0
48 x 144	210.0

U.S.S. (Rev.) or Mfr.'s Gauge, Size, Inches	Est. Wt. Per Sheet, Lb.
12 Ga. (.1046") Lb./sq. ft. 4.375	
60 x 96	175.0
60 x 120	218.8
60 x 144	262.5
60 x 240	437.5
72 x 96	210.0
72 x 120	262.5
72 x 144	315.0
84 x 240	525.0
14 Ga. (.0747") Lb./sq. ft. 3.125	
24 x 96	50.0
24 x 120	62.5
30 x 96	62.5
30 x 120	78.1
36 x 96	75.0
36 x 120	93.8
36 x 144	112.5
48 x 96	100.0
48 x 120	125.0
48 x 144	150.0
48 x 156	162.5
60 x 96	125.0
60 x 120	155.3
60 x 144	187.5
72 x 96	150.0
16 Ga. (.0598") Lb./sq. ft. 2.50	
36 x 96	60.0
36 x 120	75.0
36 x 144	90.0
48 x 96	80.0
48 x 120	100.0
48 x 144	120.0
48 x 156	130.0
60 x 96	100.0
60 x 120	125.0
60 x 144	150.0
18 Ga. (.0478") Lb./sq. ft. 2.00	
36 x 96	48.0
36 x 120	60.0
48 x 96	64.0
48 x 120	80.0
48 x 144	96.0

COLD ROLLED SHEETS

Prime Quality

These sheets have a smooth satiny finish, ideal for paint or enameling. Will bend flat in any direction without cracking.

U.S.S. (Rev.) or Mfr.'s Gauge, Size, Inches	Est. Wt. Per Sheet, Lb.
7 Ga. (.1793") Lb./sq. ft. 7.50	
36 x 96	180.0
36 x 120	225.0
10 Ga. (.1345") Lb./sq. ft. 5.625	
36 x 96	135.0
36 x 120	168.8
48 x 120	225.0
11 Ga. (.1196") Lb./sq. ft. 5.00	
36 x 96	120.0
36 x 120	150.0
48 x 120	200.0
12 Ga. (.1046") Lb./sq. ft. 4.375	
36 x 96	105.0
36 x 120	131.3
48 x 120	175.0
13 Ga. (.1897") Lb./sq. ft. 3.75	
36 x 120	112.5
48 x 120	150.0
14 Ga. (.0747") Lb./sq. ft. 3.125	
36 x 96	75.0
36 x 120	93.8
48 x 120	125.0
16 Ga. (.0598") Lb./sq. ft. 2.50	
36 x 96	60.0
36 x 120	75.0
36 x 144	90.0
48 x 96	80.0
48 x 120	100.0
60 x 120	125.0

U.S.S. (Rev.) or Mfr.'s Gauge, Size, Inches	Est. Wt. Per Sheet, Lb.
18 Ga. (.0478") Lb./sq. ft. 2.00	
36 x 96	48.0
36 x 120	60.0
48 x 96	48.0
48 x 120	80.0
19 Ga. (.0418") Lb./sq. ft. 1.75	
36 x 120	52.5
20 Ga. (.0359") Lb./sq. ft. 1.75	
36 x 96	36.0
36 x 120	45.0
48 x 96	48.0
48 x 120	60.0
48 x 144	72.0
22 Ga. (.0299") Lb./sq. ft. 1.25	
36 x 96	30.0
36 x 120	37.5
48 x 96	40.0
48 x 120	50.0
24 Ga. (.0239") Lb./sq. ft. 1.00	
36 x 96	24.0
36 x 120	30.0
48 x 96	32.0
48 x 120	40.0
26 Ga. (.0179") Lb./sq. ft. .75	
36 x 96	18.0
36 x 120	22.5
28 Ga. (.0149") Lb./sq. ft. .625	
36 x 96	12.5

STEEL SHEETS

Gauge No.	Thickness in Inches	Weight Per Sq. Ft. Lbs.
7	.1793	7.500
8	.1644	6.875
9	.1494	6.250
10	.1345	5.625
11	.1196	5.000
12	.1046	4.375
13	.0897	3.750
14	.0747	3.125
15	.0673	2.812
16	.0596	2.500
17	.0538	2.250
18	.0478	2.000
19	.0418	1.750
20	.0359	1.500
21	.0329	1.375
22	.0299	1.250
23	.0269	1.125
24	.0239	1.000
25	.0209	0.875
26	.0179	0.750
27	.0164	0.6875
28	.0149	0.625
29	.0135	0.5625
30	.0120	0.500

WEIGHT OF STEEL PLATE

Size in Inches	Weight Per Sq. Ft. Lbs.
3/16	7.66
1/4	10.21
5/16	12.76
3/8	15.32
1/2	20.42
5/8	25.53
3/4	30.63
7/8	35.74
1	40.84
1¼	51.05
1½	61.26
1¾	71.47

Large Enough
to Give Top Performance

Small Enough
to Give Personal Service

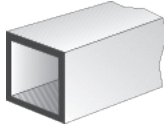
Whenever You Need Steel,
Call Us!

219-865-8500

SQUARE TUBING

CARBON STEEL

A500-GrB

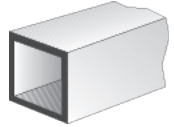


O.D. Size in Inches	Wall Thickness		Wgt./Ft. in Lbs.
	Ga.	Dec.	
1/2 x 1/2	16	.0625	.3845
3/4 x 3/4	16	.065	.6055
1 x 1	18	.049	.6337
	16	.065	.8265
	1/8	.125	1.440
	11	.120	1.436
1 1/4 x 1 1/4	3/16	.188	2.620
1 1/2 x 1 1/2	11	.120	2.252
	3/16	.188	3.230
	1/4	.250	4.110
1 3/4 x 1 3/4	11	.120	2.660
2 x 2	1/8	.125	3.068
	3/16	.188	4.490
	1/4	.250	5.410
2 1/2 x 2 1/2	1/8	.125	3.880
	3/16	.188	5.680
	1/4	.250	7.110
3 x 3	1/8	.125	4.830
	3/16	.188	6.880
	1/4	.250	8.810
	5/16	.313	10.580
3 1/2 x 3 1/2	1/8	.125	5.680
	3/16	.188	8.150
	1/4	.250	10.510
	5/16	.313	12.120
4 x 4	1/8	.125	6.530
	3/16	.188	9.420
	1/4	.250	12.210
	5/16	.313	14.830
	3/8	.375	17.270
	1/2	.500	21.630

SQUARE TUBING

CARBON STEEL

A500-GrB

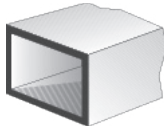


O.D. Size in Inches	Wall Thickness		Wgt./Ft. in Lbs.
	Ga.	Dec.	
5 x 5	3/16	.188	12.140
	1/4	.250	15.910
	5/16	.313	19.580
	3/8	.375	21.120
	1/2	.500	29.780
6 x 6	3/16	.188	14.650
	1/4	.250	19.310
	5/16	.313	23.830
	3/8	.375	28.220
	1/2	.500	36.720
7 x 7	3/16	.188	17.130
	1/4	.250	19.310
	5/16	.313	28.080
	3/8	.375	33.320
	1/2	.500	45.510
8 x 8	1/4	.250	26.040
	3/8	.375	38.420
	1/2	.500	50.310
	5/8	.625	61.430
10 x 10	1/4	.250	32.700
	3/8	.375	48.610
	1/2	.500	63.910
12 x 12	1/4	.250	39.440
	3/8	.375	58.470
	1/2	.500	77.510
14 x 14	3/8	.375	68.670
	1/2	.500	90.770
16 x 16	3/8	.375	78.530
	1/2	.500	104.030

RECTANGULAR TUBING

CARBON STEEL

A500-GrB

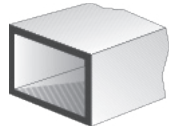


O.D. Size in Inches	Wall Thickness		Wgt./Ft. in Lbs.
	Ga.	Dec.	
2 x 1	11	.120	1.844
2 x 1½	11	.120	2.660
2½ x 1½	14	.083	2.164
	11	.120	3.070
3 x 1½	⅛	.125	3.480
	⅜	.188	5.070
3 x 2	⅛	.125	3.980
	⅜	.188	5.750
	¼	.250	7.100
3½ x 1½	⅛	.125	3.880
3½ x 2½	⅛	.125	4.700
	⅜	.188	7.040
4 x 2	⅛	.125	4.830
	⅜	.188	7.040
	¼	.250	9.110
4 x 2½	⅛	.120	5.110
4 x 3	⅜	.188	8.300
	¼	.250	10.810
	⅝	.313	13.910
5 x 2	⅜	.188	8.300
	¼	.250	10.810
5 x 3	⅜	.188	9.590
	¼	.250	12.510
	⅝	.313	15.330
	⅜	.375	18.020
	½	.500	20.880

RECTANGULAR TUBING

CARBON STEEL

A500-GrB



O.D. Size in Inches	Wall Thickness		Wgt./Ft. in Lbs.
	Ga.	Dec.	
6 x 2	⅛	.125	6.530
	⅜	.188	9.590
	¼	.250	12.510
6 x 3	⅜	.188	10.840
	¼	.250	14.210
	⅝	.313	17.440
	⅜	.375	20.570
	½	.500	24.280
6 x 4	⅜	.188	12.140
	¼	.250	15.910
	⅝	.313	19.580
	⅜	.375	23.120
	½	.500	29.780
7 x 5	⅜	.188	14.650
	¼	.250	19.310
	⅝	.313	28.830
	⅜	.375	28.220
	½	.500	38.720
8 x 2	⅜	.188	12.140
	¼	.250	15.910
8 x 3	⅜	.188	13.390
	¼	.250	17.610
	⅜	.375	25.670
8 x 4	¼	.250	19.020
	⅜	.375	28.220
	½	.500	36.720

BLACK PIPE - ROUND

WELDED - PLAIN ENDS

Specification ASTM-A-120



Can be furnished threaded or threaded and coupled.

Nom. Size	Schedule	Weight Per Ft.	Wall Thickness	Size O.D.	Size I.D.	Length in Feet
1/8"	40	.24	.068	.405	.268	21
1/4"	40	.42	.088	.540	.364	21
	80	.54	.119		.302	
3/8"	40	.57	.091	.675	.493	21
	80	.74	.126		.423	
1/2"	40	.85	.109	.840	.622	21
	80	1.09	.147		.546	
3/4"	40	1.13	.113	1.050	.824	21
	80	1.47	.154		.742	
1"	40	1.68	.133	1.315	1.049	21
	80	2.17	.179		.957	
1 1/4"	40	2.27	.140	1.660	1.380	21
	80	3.00	.191		1.278	
1 1/2"	40	2.72	.145	1.900	1.610	21
	80	3.63	.200		1.500	
2"	40	3.65	.154	2.375	2.067	21
	80	5.02	.218		1.939	
2 1/2"	40	5.79	.203	2.875	4.469	21
	80	7.66	.276		2.323	
3"	40	7.58	.216	3.500	3.068	21
	80	10.25	.300		2.900	
	160	14.32	.438		2.624	
3 1/2"	40	9.11	.226	4.000	3.548	21
	80	12.51	.318		3.364	
4"	40	10.79	.237	4.500	4.026	21
	80	14.98	.337		3.826	

BLACK PIPE - ROUND

WELDED - PLAIN ENDS

Specification ASTM-A-120



Can be furnished threaded or threaded and coupled.

Nom. Size	Schedule	Weight Per Ft.	Wall Thickness	Size O.D.	Size I.D.	Length in Feet
*5"	40	14.62	.258	5.563	5.047	16-24R
	80	20.78	.375		4.813	
**6"	--	12.92	.188	6.625	6.249	16-24R
*6"	40	18.97	.280		6.065	
*6"	80	28.57	.432	5.761		
**8"	--	16.94	.188	8.625	8.249	16-24R
*8"	40	22.36	.250		8.125	
*8"	80	28.55	.322		7.981	
*8"	XS	43.39	.500		7.625	
**10"	--	21.21	.188	10.750	10.374	16-24R
*10"	20	28.04	.250		10.25	
*10"	40	40.48	.365		10.020	
**12"	--	25.22	.188	12.750	12.374	16-24R
*12"	20	33.38	.250		12.250	
*12"	STD.	49.56	.375		12.00	
*12"	XS	65.42	.500		11.750	
*14"	STD.	54.57	.375	14.000	13.250	16-24R
	XS	72.09	.500		13.000	
*16"	XS	82.77	.500	16.000	15.000	16-24R
*18"	STD.	70.59	.375	18.000	17.250	16-24R

Also available Galvanized

*Seamless ASTM A-53 Gr. B

*Welded ASTM A-500 Gr. B

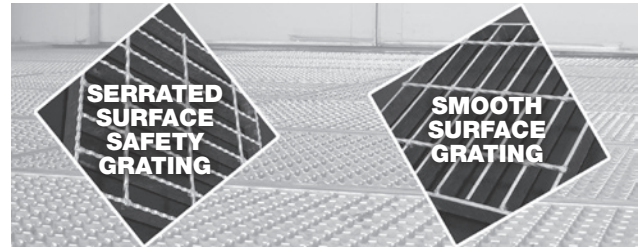


FULLY THREADED STEEL BARS ZINC PLATED FINISH

GALVANIZED
B-7

NATIONAL COARSE THREADS
72" Lengths 144" Lengths

Size & N.C. Threads Per Inch	Weight in Lbs. Per 100 Ft.
1/4" - 20	12
5/16" - 18	20
3/8" - 16	29
7/16" - 14	40
1/2" - 13	53
9/16" - 12	67
5/8" - 11	84
3/4" - 10	124
7/8" - 9	170
1" - 8	223
1 1/8" - 7	281
1 1/4" - 7	354
1 3/8" - 6	425
1 1/2" - 6	512



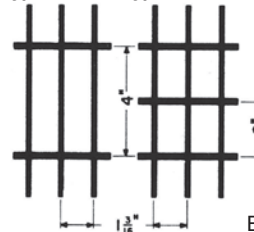
OPEN STEEL FLOOR GRATING

Conforms to Specifications RR-G-66 1a and MIL-G-1958

Grating available in Carbon Steel, Aluminum & Stainless

STANDARD MESH TYPES

Type 19-W-4 Type 19-W-2



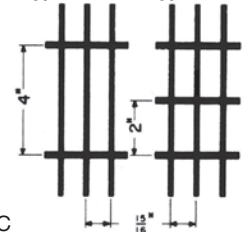
CROSS BARS C to C

BEARING BARS C to C

Maximum Width of Panels 3'0"

CLOSE MESH TYPES

Type 15-W-4 Type 15-W-2



WEIGHT IN LBS. PER SQ. FT.

Bearing Bars	Type 19-W-4	Type 19-W-2	Type 15-W-4	Type 15-W-2
3/4 x 1/8	4.0	4.6	4.8	5.5
3/4 x 3/16	5.6	6.3	6.9	7.5
1 x 1/8	5.1	5.7	6.2	6.9
1 x 3/16	7.3	8.0	9.0	9.6
1 1/4 x 1/8	6.1	6.8	7.5	8.2
1 1/4 x 3/16	8.9	9.6	11.1	11.7
1 1/2 x 1/8	7.3	7.9	9.0	9.6
1 1/2 x 3/16	10.6	11.2	13.1	13.8
1 3/4 x 3/16	12.2	12.9	15.2	15.8
2 x 3/16	13.9	14.5	17.3	17.9
2 1/4 x 3/16	15.4	16.1	19.2	19.9
2 1/2 x 1/8	17.1	17.7	21.3	22.0

STOCK SIZES

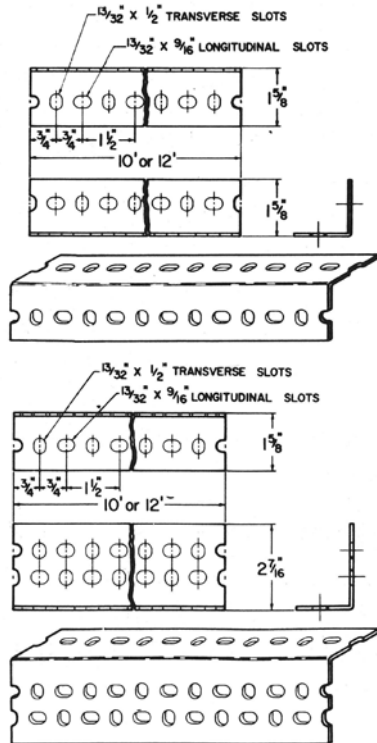
Type	Width in Inches		Length in Inches	
19W	24	36	240	288

CATWALK 8' LENGTH GRATING

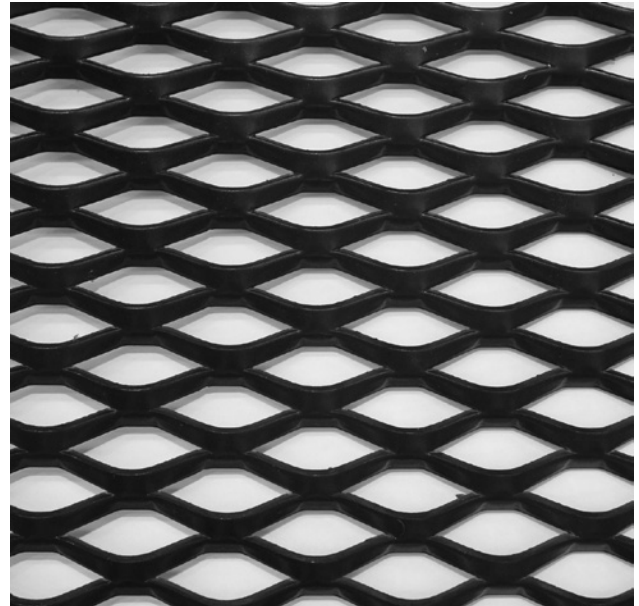
All dimensions and weights are approximate and subject to mill tolerances.

Style Designation	Weight in Lbs. Per Panel	Standard Sheet Size in Feet	
		Width SWD	Length LWD
3# Wheeling Catwalk	96 lb.	8'	4'
	120 lb.	10'	4'
3.14# Wheeling Catwalk	101 lb.	8'	4'
	126 lb.	10'	4'
	189 lb.	10'	6'
4# Wheeling Catwalk	128 lb.	8'	4'
	160 lb.	10'	4'
4.27# Wheeling Catwalk	137 lb.	8'	4'
	171 lb.	10'	4'

SLOTTED ANGLE



EXPANDED METAL DIAMOND PATTERNS



Safe-T-Mesh and Flattened

Safe-T-Mesh offers high rigidity plus maximum “see through” with selection of certain styles, while other styles afford effective screening to obscure unsightly background.

Supplied in a variety of sized and weights, Safe-T-Mesh can be cut and formed to almost any size and shape required. And it will enhance the usefulness, appearance and saleability of any product on which it is used.

Flattened Expanded Metal offers easy workability plus decorative beauty.

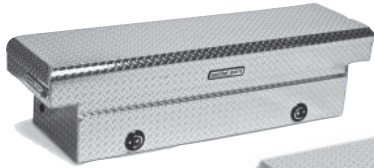
Ideal for grilles, baskets, trays, bins, shelving, display stands, store window fixtures and backgrounds, since many unique and attractive effects are obtained by applying paint, lacquer, and bronzing liquids; by electroplating; or by applying and type finish of the proper viscosity.

CARBON STEEL SAFE-T-MESH Standard (XM)

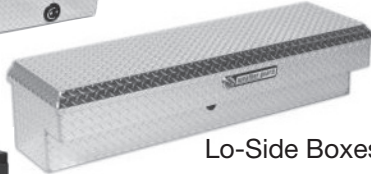
Style	Lbs. Per 100 Sq. Ft.	Standard Sheet Size in Feet		Design Sizes in Inches			Opening Size in Inches			Approximate Strand Size Inches		Overall Thickness Inches	Number of Designs Per Ft.		% of Open Area
		Width SWD	Length LWD	SWD	LWD	SWO	SWO	LWO	LWO	Thickness	SWD		LWD		
														Thickness	
1/4" #18	114	4	8	.25	1.00	.16	.67	.048	.072	.147	48	12	38		
1/2" #20	43	4	8			.44	.97	.036	.072	.140			76		
1/2" #18	70	4 & 6	8	.50	1.20	.42	.94	.048	.086	.172	24	10	68		
1/2" #16	86	4	8 & 10			.38	.90	.060	.087	.175			67		
1/2" #13	147	4	8 & 10			.33	.88	.092	.096	.204			60		
3/4" #16	54	4 & 6	8, 4 & 10			.78	1.69	.060	.101	.210			80		
3/4" #13	80	4 & 6	8, 4 & 10	.92	2.00	.80	1.63	.094	.096	.205	13	6	74		
3/4" #10 13 ga.	120	4 & 6	8			.70	1.61	.092	.144	.290			71		
3/4" #9 10 ga.	180	4 & 6	8, 4 & 10			.66	1.52	.134	.150	.312			65		
1" #16	44	4	8	1.00	2.40	1.00	2.03	.060	.087	.192	12	5	87		
1 1/2" #16	40	4	8			1.25	2.61	.060	.108	.230			86		
1 1/2" #13	60	4 & 6	8 & 10			1.23	2.55	.092	.105	.242			85		
1 1/2" #10 13 ga.	79	4 & 6	8	1.33	3.00	1.19	2.44	.092	.138	.284	9	4	81		
1 1/2" #9 10 ga.	120	4 & 6	8 & 10			1.14	2.28	.134	.144	.312			68		
1 1/2" #6	250	4	8			1.03		.198	.203	.433			61		
2" #9 10 ga.	90	4	8	1.85	4.00	1.67	3.38	1.34	.149	.312	6.5	3	84		

CARBON STEEL FLATTENED (FXM)

Style	Lbs. Per 100 Sq. Ft.	Standard Sheet Size in Feet		Design Sizes in Inches			Opening Size in Inches			Approximate Strand Size Inches		Overall Thickness Inches	Number of Designs Per Ft.		% of Open Area
		Width SWD	Length LWD	SWD	LWD	SWO	SWO	LWO	LWO	Thickness	SWD		LWD		
														Thickness	
1/4" #18F	108	4	8	.25	1.05	.13	.72	.040	.080	.040	48	11.6	37		
1/2" #20F	40	3 & 4	8			.38	.94	.029	.079	.029			70		
1/2" #18F	66	3 & 4	8	.50	1.25	.31	1.00	.039	.097	.039	24	9.5	63		
1/2" #16F	82	3 & 4	8, 4 & 10			.31	1.00	.050	.096	.050			62		
1/2" #13F	140	3 & 4	8, 4 & 10			.28	1.00	.070	.107	.070			55		
3/4" #16F	51	3 & 4	8, 4 & 10	.92	2.10	.72	1.78	.048	.111	.048			75		
3/4" #14F3	63	3 & 4	8, 4 & 10			.72	1.75	.061	.105	.061	13	5.7	73		
3/4" #13F	75	3 & 4	8, 4 & 10			.72	1.72	.070	.106	.070			76		
3/4" #9F 10 ga.	171	3 & 4	8, 10 & 12			.56	1.63	.120	.165	.120			59		
1" #16F	41	4	8	1.00	2.50	.88	2.16	.050	.098	.050	12	4.7	79		
1 1/2" #16F	38	4	8			1.00	2.59	.048	.119	.048			71		
1 1/2" #14F	46	4	8	1.33	3.20	1.09	2.72	.060	.134	.060	9	3.7	76		
1 1/2" #13F	57	4	8 & 10			1.09	2.72	.00	.116	.070			81		
1 1/2" #9F 10 ga.	114	3 & 4	8, 4 & 10			1.09	2.72	.110	.158	.110			80		
2" #9F 10 ga.	85	4	8	1.85	4.27	1.53	3.59	.105	.186	.105	6.5	2.8	81		



Saddle Boxes



Lo-Side Boxes



Underbed Boxes



Hi-Side Boxes



REINFORCING BARS



CARRIED IN STOCK
BARS CONFORMING TO:

ASTM A615 - Billet steel deformed bars

Grade 40 - All Sizes

Grade 60 - All Sizes

ASTM A706 - Gr60 - Weldable

Bar No.	Nominal Dimensions in Inches			Weight Per Foot, in Lbs.
	Diameter in Inches	Area Sq. Inches	Perimeter in Inches	
3	0.375	0.11	1.178	0.376
4	0.500	0.20	1.571	0.668
5	0.625	0.31	1.963	1.043
6	0.750	0.44	2.356	1.502
7	0.875	0.60	2.749	2.044
8	1.000	0.79	3.142	2.670
9	1.128	1.00	3.544	3.400
10	1.270	1.27	2.990	4.303
11	1.410	1.56	4.430	5.313
14	1.693	2.25	5.320	7.650
16	2.257	4.00	7.090	13.600

PLAIN WELDED WIRE REINFORCING FABRIC (MESH)

Style	Gage	Size Roll/Sheet	Unit Weight
6 x 6 - W1.4/W1.4	10/10	5' x 150' Roll	149.81
		8' x 12'6" Sheet	19.62
		8' x 20' Sheet	31.39
6 x 6 - 2.1/2.1	8/8	8' x 12'6" Sheet	29.43
		8' x 20' Sheet	47.08
6 x 6 - 2.9/2.9	6/6	8' x 12'6" Sheet	40.64
		8' x 20' Sheet	65.02
6 x 6 - 4/4	4/4	8' x 20' Sheet	89.67
4 x 4 - 2.9/2.9	6/6	8' x 20' Sheet	96.54
4 x 4 - 4/4	4/4	8' x 20' Sheet	133.15

REBAR



- Grade-60** used on all government and most private work (60,000psi tensile strength)
- Grade-40** used on private work only (40,000psi tensile) slightly cheaper than 60
- A706** weldable rebar
- Epoxy Coated** "green bar" used in bridge decks parrapet walls, tanks or any structure exposed to freeze thaw



REBAR TIRE WIRE

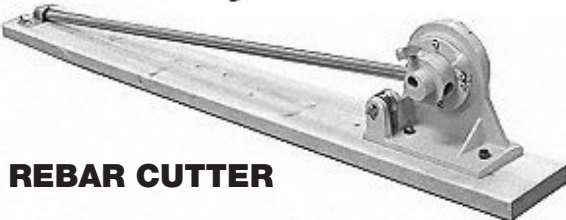
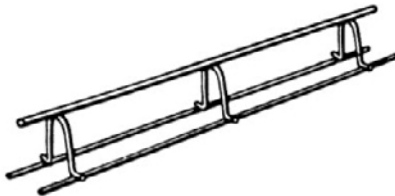
A 16 gauge annealed wire for use with reel type dispensers; or as a general purpose wire. Square core Re-Bar Tie Wire eliminates clumsy coils draped around the workman's neck. Furnished in 3½ lb. coils; 20 coils per carton.

REBAR FABRICATED

INDIVIDUAL HIGH CHAIRS



CONTINUOUS HIGH CHAIR UPPER



REBAR CUTTER



MERCHANT QUALITY WIRE

This handy multi-purpose wire is available either annealed or galvanized in a full range of sizes. From 9 to 16 gauge. Furnished in 100 lb. and even weight coils.



WACKER NEUSON

CONSTRUCTION EQUIPMENT

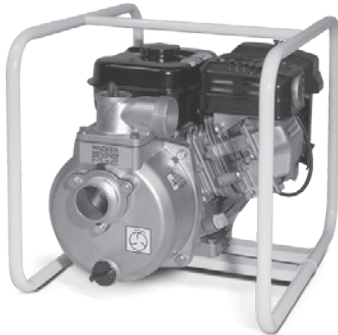
Compactors



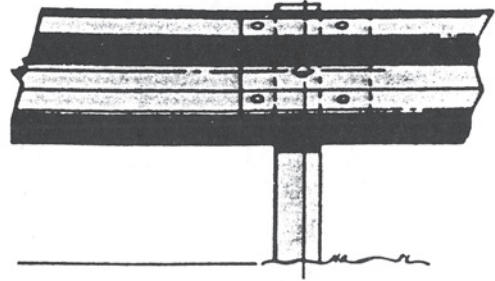
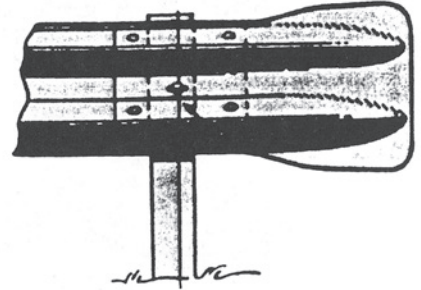
Generators



Pumps



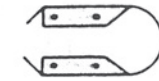
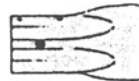
HIGHWAY GUARD RAIL GALVANIZED



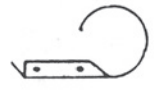
END WINGS



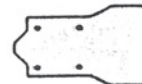
Flared Wings



Barrier Wings



Buffer Wings



STIHL®



CUTQUICK CONSTRUCTION SAWS

TS 410 - 12"
TS 420 - 14"
TS 500i - 14"
TS 700 - 14"
TS 800 - 16"

We Also Carry:

Chain Saw
Trimmers
Blowers
Hedge Trimmers

Check out our line of diamond wheels:

Pearl
Core Cut
Husqvarna/Felxovit Abrasive Wheels

57

Husqvarna®

CONSTRUCTION PRODUCTS

GAS OR ELECTRIC POWER CUTTERS

K770 - 12"
K770 - 14"
K790 - 16"
K1270 - 16"
K970 - Chain
K970 - Ring
K760 - Cut-N-Break
K4000 - Electric



HUSQVARNA PORTASAW

MS 360 and MS360G

GAS OR ELECTRIC POWERED BRICK TABLE SAWS



58



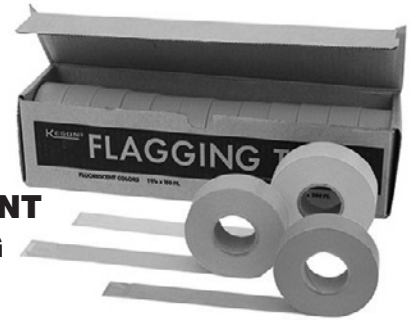
BOSCH

Invented for life



- Angle Grinders
- Hammer Drills
- Concrete & Masonry Drill Bits
- Cordless Tools
- Metal & Wood Drill Bits
- Metal & Wood Cutting
- Routers & Sanders
- Measuring & Layout Tools
- Dust Collection

**KESON
FLUORESCENT
FLAGGING
TAPE**



**IRWIN
HIGH VISIBILITY BARRIER
TAPES "CAUTION"**



**IRWIN
CHALK LINE
REELS
STRAIGHT-LINE**



**BRAIDED
NYLON LINE/
TWISTED
NYLON LINE
MASON'S LINE**

Light weight twisted nylon cord. In standard and florescent colors.



**KESON
POWDERED
CHALK**



**AMERICAN
OPTICAL
HEARING
PROTECTOR**



**EAR PLUGS
CORDED
& UN-CORDED**



**FACE SHIELD &
HEAD GEAR**

**BOSCH / SPECTRA
CST/BERGER
LASER LEVELS &
TRANSITS AVAILABLE**



**KESON
NYLON CLAD
TAPES**

**KOMELON
TAPE RULE**



**LUFKIN
FOLDING RULERS**



**LUFKIN
STEEL TAPES**



**KESON
OPEN REEL
FIBERGLASS
TAPES**



**ROLATAPE
MEASURING
WHEELS**

- NO. 12
- NO. 30
- NO. 45
- NO. 50

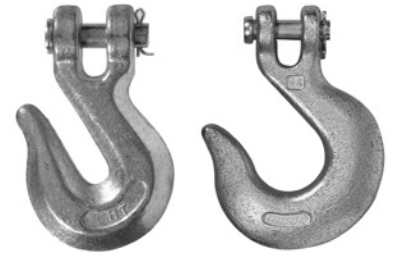


**STEEL
STRAPPING**

CHAIN



**GRAB AND
SLIP HOOKS**



LOAD BINDERS





RAIN SUIT

**PULL ON
BOOTS**



**LEATHER PALM GLOVE
GLOVE LINERS
RUBBER GLOVES
BROWN JERSEY**



**LADDERS
FIBERGLASS & ALUMINUM
STEP LADDERS
EXTENSION LADDERS**



- **Resi-Weld Gel Paste**
Multi-purpose construction epoxy
- **CS-309-25**
Non-yellowing, acrylic concrete cure & seal
- **Tiah**
Non-yellowing, acrylic concrete sealer
- **1600-White Series**
Water-base, wax-base, concrete cure
- **Vocomp-20**
Water-base Acrylic cure & seal
- **Duoguard**
Form release agent - VOC compliant
- **Fiber Expansion Joint**
Multi-purpose expansion - contraction joint-filler
- **Deck-O-Foam**
Expansion Joint Foam Filler
- **Kool-Rod**
Backer rod for cold-applied sealants
- **588**
Non-shrink, non-ferrous, non-gaseous precision grout
- **CG-86**
Construction grade grout
- **Meadow-Patch 20**
Fast setting, general-purpose repair mortar

MANY OTHER PRODUCTS AVAILABLE

CULVERT PIPE



Specifications and Shipping Weights

Pipe Dia. In.	Water Way Area Sq. Ft.	Plain Galvanized Corrugated Steel Pipe Lbs./Lin. Ft.					Additional Weight of Asphalt (Lbs.)		
		2 $\frac{2}{3}$ " x 1/2" 2 oz. Coat.					Fully Coated	Coated & Paved	
		Ga 18	16	14	12	10			8
6		3.9	4.9				1.7		
8		5.1	6.4				1.9		
10		6.4	7.9				2.3		
12	.08	7.6	9.5	11.9	16.7		3.2	6.6	
15	1.2	9.4	11.7	14.8	20.4		3.4	8.1	
18	1.8	11.2	14.1	17.6	24.4		4.5	9.7	
21	2.4	13.1	16.3	20.4	28.3		4.7	11.3	
24	3.1	14.9	18.6	22.3	32.2		5.0	12.7	
30	4.9	18.5	23.1	28.9	40.1	51.6	61.3	5.7	16.2
36	7.1	22.7	27.7	34.6	47.9	60.3	73.3	8.5	19.7
42	9.6	25.8	32.3	40.3	55.9	70.1	85.4	10.0	22.9
48	12.6	29.4	36.7	45.9	63.7	80.0	97.3	10.3	26.0
54	15.9		41.0	51.2	72.8	89.9	109.4	10.4	28.1
60	19.6			56.8	80.8	99.7	121.4	13.2	32.7
66	23.8			62.4	88.8	109.6	133.4	13.8	34.7
72	28.3				95.0	119.5	145.4	15.0	38.7
78	33.7					129.4	157.4	15.3	41.3
84	38.5					139.2	169.4	16.7	45.6
90	44.2					149.2	181.6	17.2	48.8
96	50.3					160.0	193.4	17.8	52.0

Give us your exact cutting list of structurals. Your lengths may combine with other order and save waste.

WE HAVE YOUR LENGTHS.

FIBER TUBE PAPER COLUMN FORMS



Fiber Tube fiber forms are made from many layers of high quality fiber. Spirally wound and laminated with special adhesive. The fastest, most economical way to form round concrete.

- Lightweight
- No fabricating
- Disposable
- Pour entire job at one time
- Built in "moisture barrier" provides curing
- Strip easily

CONCRETE FOR ROUND COLUMNS AND COLUMN CAPITALS

Column dia., in.	Concrete per lin. ft. of height, cu. ft.	3'6" dia.	4'0" dia.	4'6" dia.	5'0" dia.	5'6" dia.	6'0" dia.
		Additional concrete for capitals, cu. ft.					
12	.08	7.8	8.9	12.9	17.7	23.6	30.7
14	1.0	7.6	8.8	12.6	17.4	23.2	30.2
16	1.4	6.9	8.1	11.8	16.5	22.3	29.2
18	1.8	6.4	7.4	11.1	15.7	21.2	28.2
20	2.2	5.9	6.8	10.4	14.9	20.6	27.2
22	2.6	5.4	6.5	9.9	14.3	19.7	26.4
24	3.1	4.8	5.8	9.3	13.5	18.7	25.2
26	3.6	4.2	5.2	8.5	12.7	17.8	24.1
28	4.2	3.6	4.6	7.7	11.7	16.7	22.9
30	4.9	3.2	4.1	7.0	10.9	15.7	21.8
32	5.6	2.2	3.1	5.8	9.5	14.2	20.0
34	6.3	1.6	2.6	5.2	8.6	13.2	18.9
36	7.0				8.0	12.4	17.8
38	7.9				6.58	10.9	16.2
40	8.7				6.0	9.8	15.0
42	9.6				5.2	8.9	13.7
44	10.5						
46	11.5						
48	12.6						

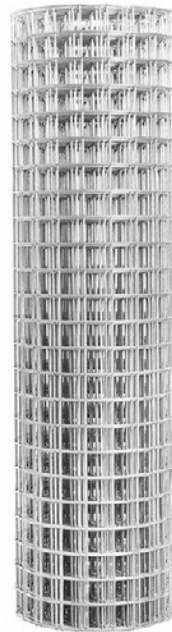
These quantities for capitals (flares caps) are extra, excluding the concrete in the round column. Therefore the concrete in the round column must be figured for the full height, slab to slab.

CONCRETE CHUTE



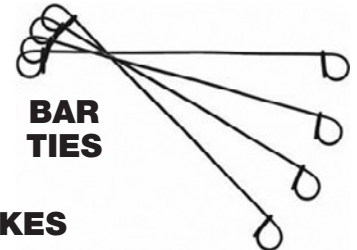
69

WIRE MESH MATTS & ROLLS



TIE WIRE

16 gauge black annealed



BAR TIES

WOOD STAKES



ROUND STEEL STAKES JET



Round Stakes 3/4" DIA. - nail holes are staggered to allow positive nailing despite twisting of stake due to variable ground conditions.

70

